

Around The Horn Plan

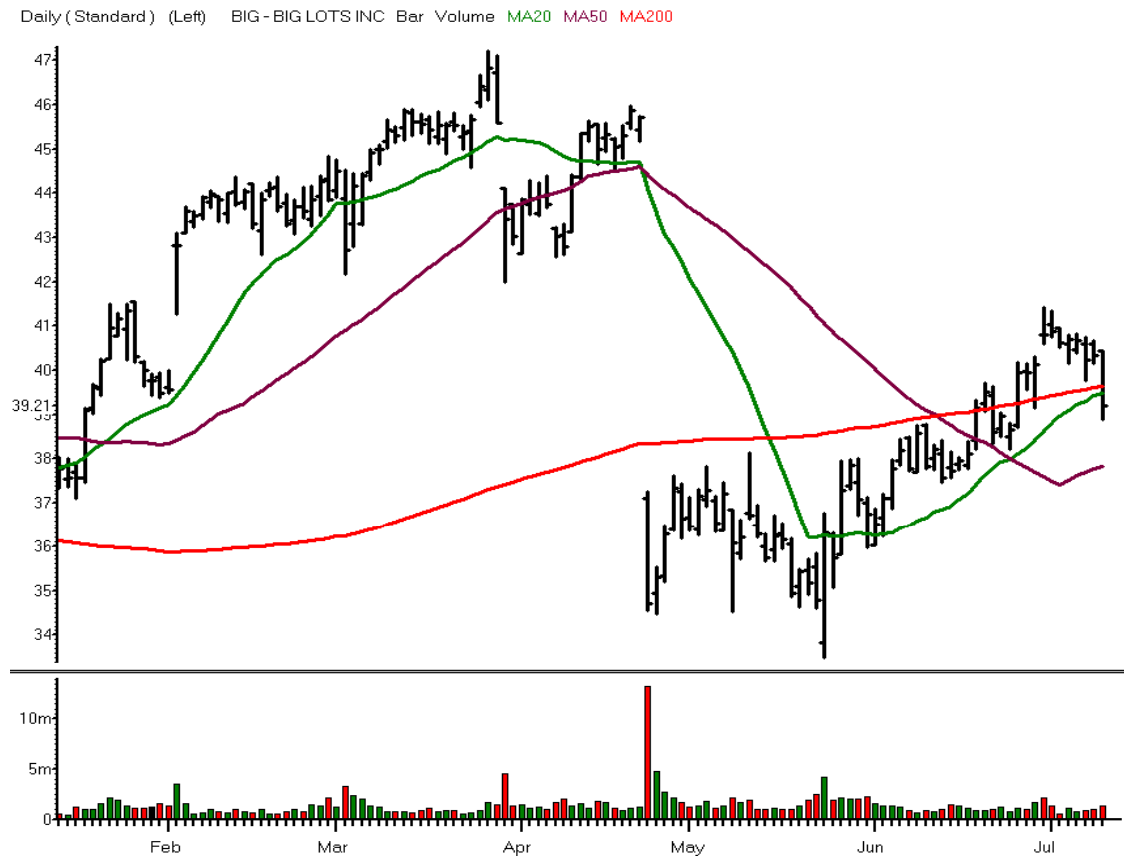
Thursday, July 12, 2012



Symbol	ARO	Sector Symbol	\$RLX.X
Description	AEROPOSTALE		
Pattern	Double Header	Apparel Retail	
Position	Short	Resistance 2	20.00
Entry	19.14	Resistance 1	19.66
Stop	19.42	Pivot	19.45
Initial Target	18.73	Support 1	19.11
Ratio	1.46	Support 2	18.90
50% To Target	18.94		

Around The Horn Plan

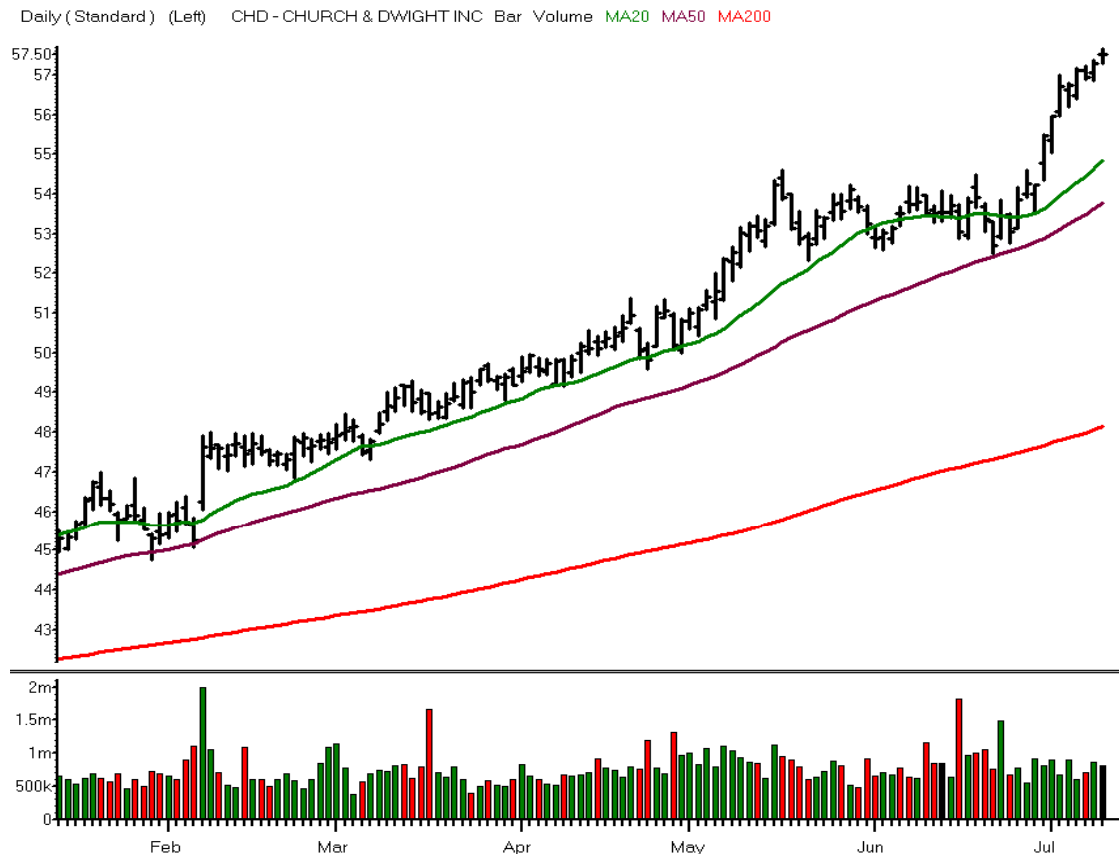
Thursday, July 12, 2012



Symbol	BIG	Sector Symbol	\$RLX.X
Description	BIG LOTS INC		
Pattern	Fast Ball	General Merchandise Stores	
Position	Short	Resistance 2	41.08
Entry	38.79	Resistance 1	40.14
Stop	39.24	Pivot	39.52
Initial Target	38.20	Support 1	38.58
Ratio	1.31	Support 2	37.96
50% To Target	38.50		

Around The Horn Plan

Thursday, July 12, 2012



Symbol	CHD	Sector Symbol	\$CMR.X
Description	CHURCH & DWIGHT INC		
Pattern	Infield Fly	Household Products	
Position	Short	Resistance 2	57.85
Entry	57.19	Resistance 1	57.68
Stop	57.40	Pivot	57.49
Initial Target	56.89	Support 1	57.32
Ratio	1.43	Support 2	57.13
50% To Target	57.04		

Around The Horn Plan

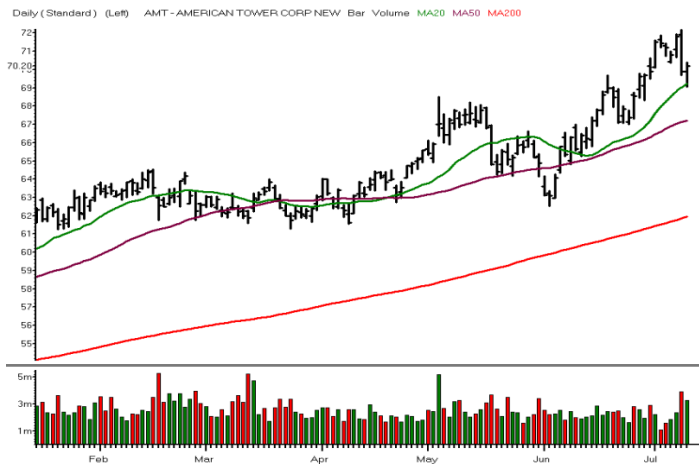
Thursday, July 12, 2012



Symbol	GTI	Sector Symbol	\$DJI
Description	GRAFTECH INTL LTD		
Pattern	Backdoor Slider	Electrical Components & Equipment	
Position	Short	Resistance 2	9.06
Entry	8.62	Resistance 1	8.90
Stop	8.81	Pivot	8.81
Initial Target	8.32	Support 1	8.65
Ratio	1.58	Support 2	8.56
50% To Target	8.47		

Stocks To Watch

Thursday, July 12, 2012



AMERICAN TOWER CORP NEW

Symbol	AMT
Pattern	Switch Hitter
Position	Long
Entry	70.49
Stop	?
Initial Target	71.21
50% To Target	70.85
Resistance 2	71.23
Resistance 1	70.71
Pivot	69.88
Support 1	69.36
Support 2	68.53
Sector	Specialized REITs
Sector Symbol	\$DJR.X



HARLEY DAVIDSON INC

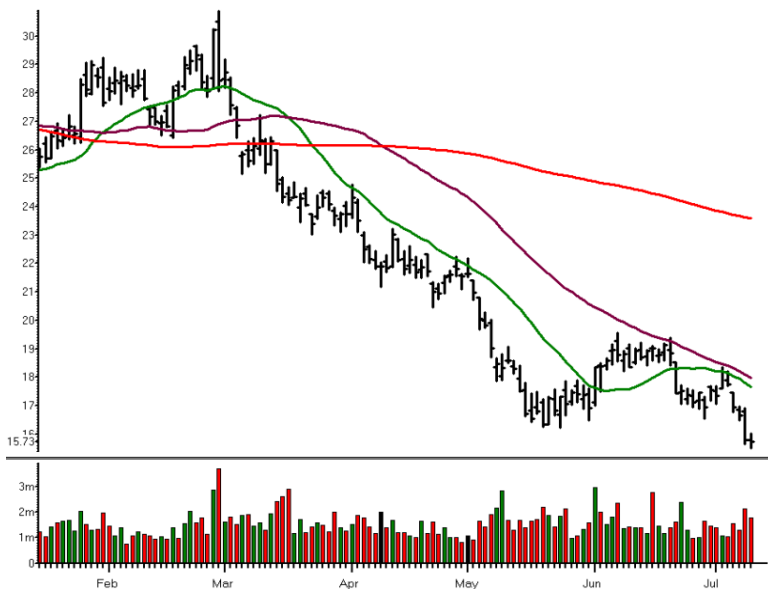
Symbol	HOG
Pattern	Fast Ball
Position	Short
Entry	44.36
Stop	?
Initial Target	43.93
50% To Target	44.15
Resistance 2	47.54
Resistance 1	46.18
Pivot	45.32
Support 1	43.96
Support 2	43.10
Sector	Motorcycle Manufacturers
Sector Symbol	\$IXY.X



Stocks And Sectors On The Radar

Thursday, July 12, 2012

Daily (Standard) (Left) CDE - COEUR D'ALENE MINES CORP IDAHO COM NEW Bar Volume MA20 MA50 MA200



COEUR D ALENE MINES CORP IDAHO COM NEW

Symbol	CDE
Sector	Precious Metals & Minerals
Sector Symbol	\$XAU.X
Pattern	Backdoor Slider
Position	Short
Entry	15.41
Target	15.12

R2	16.26
R1	16.00
Pivot	15.75
S1	15.49
S2	15.24

50% To Target 15.27

Daily (Standard) (Left) CY - CYPRESS SEMICONDUCTOR CORP Bar Volume MA20 MA50 MA200



CYPRESS SEMICONDUCTOR CORP

Symbol	CY
Sector	Semiconductors
Sector Symbol	\$SOX.X
Pattern	Backdoor Slider
Position	Short
Entry	12.05
Target	11.85

R2	12.48
R1	12.38
Pivot	12.27
S1	12.17
S2	12.06

50% To Target 11.95

© 2003 - 2012 Peterson/Manz Trading, Inc. Past Results are not indicative of future returns. There is a high degree of risk in trading. Peterson/Manz Trading, Inc. assumes no responsibility for your trading results. Principals of Peterson/Manz Trading, Inc. may or may not at times maintain, directly or indirectly, positions mentioned in this service.

Trade Date

12-Jul-12

Thursday

Around The Horn

Symbol	Setup	Entry	Direction	Stop	50%	Target	Sector Symbol
ARO	Double Header	19.14	Short	19.42	18.94	18.73	\$RLX.X
BIG	Fast Ball	38.79	Short	39.24	38.50	38.20	\$RLX.X
CHD	Infield Fly	57.19	Short	57.40	57.04	56.89	\$CMR.X
GTI	Backdoor Slider	8.62	Short	8.81	8.47	8.32	\$DJI

Stocks To Watch

Symbol	Setup	Entry	Direction	Stop	50%	Target	Sector Symbol
AMT	Switch Hitter	70.49	Long		70.85	71.21	\$DJR.X
HOG	Fast Ball	44.36	Short		44.15	43.93	\$IXY.X

Stocks And Sectors On The Radar

Symbol	Setup	Entry	Direction	Stop	50%	Target	Sector Symbol
CDE	Backdoor Slider	15.41	Short	SCALP	15.27	15.12	\$XAU.X
CY	Backdoor Slider	12.05	Short	SCALP	11.95	11.85	\$SOX.X

© 2003 - 2012 Peterson/Manz Trading, Inc. Past Results are not indicative of future returns. There is a high degree of risk in trading. Peterson/Manz Trading, Inc. assumes no responsibility for your trading results. Principals of Peterson/Manz Trading, Inc. may or may not at times maintain, directly or indirectly, positions mentioned in this service.

Trade Date

12-Jul-12

Thursday

Around The Horn

Symbol	Setup	Entry	Direction	Stop	50%	Target	Sector Symbol
ARO	Double Header	19.14	Short	19.42	18.935	18.73	\$RLX.X
BIG	Fast Ball	38.79	Short	39.24	38.495	38.2	\$RLX.X
CHD	Infield Fly	57.19	Short	57.4	57.04	56.89	\$CMR.X
GTI	Backdoor Slider	8.62	Short	8.81	8.47	8.32	\$DJI

Stocks To Watch

Symbol	Setup	Entry	Direction	Stop	50%	Target	Sector Symbol
AMT	Switch Hitter	70.49	Long		70.85	71.21	\$DJR.X
HOG	Fast Ball	44.36	Short		44.145	43.93	\$IXY.X

Stocks And Sectors On The Radar

Symbol	Setup	Entry	Direction	Stop	50%	Target	Sector Symbol
CDE	Backdoor Slider	15.41	Short	SCALP	15.265	15.12	\$XAU.X
CY	Backdoor Slider	12.05	Short	SCALP	11.95	11.85	\$SOX.X

© 2003 - 2012 Peterson/Manz Trading, Inc. Past Results are not indicative of future returns. There is a high degree of risk in trading. Peterson/Manz Trading, Inc. assumes no responsibility for your trading results. Principals of Peterson/Manz Trading, Inc. may or may not at times maintain, directly or indirectly, positions mentioned in this service.

Around the Horn: The Rule Book

Just as the Around the Horn trading plan developed for our personal use, these rules also evolved to maximize our own trading profits, minimize risk and still allow the trades room to breathe. When we compute the monthly results, we use these rules to calculate the plan's efficacy. Individual trade results may exceed or fall short of the monthly results (for example, more or less favorable fills or missing a trade), but these rules allow comparison of results over time and a measure for one's own trading performance using pre-established criteria. While these guidelines will always have an exception to the rule (e.g. stopping out of a trade that later becomes profitable) over time, they serve us well more often than not.

Entries:

1. The entry price (or entry tick within the allowable slippage or gap) has to **print on the NYSE**. That is, a stock that ticks the entry price on the NAS on or before the open does not count as a legitimate entry as the tick must originate on NYSE;
2. For **Gaps** and **allowable slippage**, profit target is the key. Your entry slippage should not be more than 25% of the total amount you expect to make and for planned trades should never be more than 20 cents total. Thus, if your profit target is a 40 cent gain, then allow for 10 cents of slippage. If the profit target is over a dollar, then 20 cents of slippage is reasonable. If you enter a trade beyond this level, then mentally shift gears and treat the trade as an intraday play or scalp trade, not as a planned trade;
3. **No new entries** after 12:20 PST/3:20 EST (40 minutes to close).

Stop Protocol:

Once you enter a trade at the stated entry price or within the acceptable 10 cent slip level there are several criteria we use to protect ourselves from losses, as well as protect profits, while still allowing some room for volatility. During the trading day, I like to think of these as hurdles, moving from one to the next as the trade progresses.

Hurdle 1: After entering the trade at the stated entry price, watch to see if the trade goes 10 cents in your favor FROM THE STATED ENTRY PRICE, NOT YOUR FILL PRICE. If it does not go 10 cents in the trade's favor from the entry price before it goes 10 cents against the trade, exit the trade 10 cents against your trade and watch for another entry opportunity.

Issues: This strategy has protected us against what I call getting "tagged-in" only to head straight to the stop-loss. To execute this strategy, a trader needs to be comfortable paying the extra commissions if the trade comes back to your entry. Also, another entry here does not count as a "second" entry. If you are uncomfortable with this strategy, don't use it and use the stop level as your exit.

Hurdle 2: Once the trade is in your favor 10 cents beyond the entry price, keep the stop loss at the stated stop loss until the trade hits the 50% to Target level.

Hurdle 3: At the 50% to Target level, move the Stop Loss from the stated stop loss to a breakeven level at the STATED ENTRY PRICE, NOT YOUR FILL PRICE.

Hurdle 4: Once the trade ticks within 10 cents to the stated Initial Profit Target, move the stop to a Profit Stop at the 50% to Initial Profit Target level.

Hurdle 5: Once the trade hits the Initial Profit Target, determine if the trade is zooming past your price (in other words, it would be a struggle to exit the trade at that price as it is trading so strongly in your favor it has already surpassed the Initial Profit Target before you can get your order in). If this happy situation is occurring, stay in and trail with a profit stop, initially at the Profit Target.

If the trade is not this strong (as occurs much more often), exit the trade at the Initial Profit Target. Some traders choose to exit only half or some other percentage at this level and then trail a profit stop initially at the 50% to Target level, then later the Initial Profit Target, then by some other method as the trade gets progressively further from this level (reversal of two closes, violation of the 8 period simple moving average, support/resistance, etc.).

Note: These are the rules we use to calculate the monthly performance. As trader's you may find some other variation useful. For instance, for the 10 cent "tagged in" rule when a trade has not gone more than 10 cents in your favor before reversing, some traders prefer not to exit at 10 cents against you in favor of a wider exit at a 50% to stop loss level, giving the stock a little more room to breathe. Another example some traders employ is to take a percentage of profits at the 50% to Target level, another percentage at the initial profit target, and the final if it travels further, with protective stops for each of these levels as the trade progresses.

It is important to understand how we are trading and the rules we are using. It is also important that trading rules suit your psychology. If you have questions or thoughts please don't hesitate to contact me at: Julie@TraderInsight.com

Expanded Rules For Manual Trading

Around the Horn:

1. Price must travel at least 8 cents through the entry price before turning around for a second entry (or first entry after an opening gap). Should the price touch the entry price, without going the required 8 cents, but then go at least to the 50% line, the missed opportunity counts as an "entry."
2. After two 10-cent scratch losses, the entry price moves to one cent beyond the day's high (for longs) or low (for shorts). This rule is not applicable after opening gaps or after second entries, like what is being referred to in #1, because we are moving the entry price to one cent beyond the day's high or low. We can only move the entry price a maximum of five cents, meaning we got tagged in by a maximum of four cents.
3. After second entry, Around the Horn stock become a discretionary Stock to Watch when you must find a stop based on the day's trade, and try to find market and sector support.
4. Maximum three 10-cent scratch loss trades.
5. 10-cent scratch loss trades do not count as an "entry" in Around the Horn stocks. Only stocks that go to the target, the full stop, or where the stop was trailed count as an "entry."
6. The 10-cent rule (stock went 10 cents against us before going 10 cents in our favor) is suspended during high volatility.

Stocks to Watch:

1. You must find a stop that has a Reward/Risk Ratio of at least 1.50. (For instance, if it's 48 cents from the entry to the target, the stop must not be more than 32 cents.)
2. Stops must be found on 5-minute charts.
3. A stop must contain the last pullback before triggering or the last consolidation before triggering. That is, the extreme high (for shorts) or low (for longs) of the last move is contained between the stop line and the trigger line.
4. The spread of the stock must be UNDER 5 cents.
5. The market (SPY or SPX) and sector should confirm the direction of the trade before a Stock to Watch triggers. The market and sector confirmation should be LEADING the stock. That is, the market and sector rally (for longs) or sell-off (for short) should begin before the Stock to Watch rallies or sells off, or the market and sector rally or sell-off should be stronger (steeper move).
6. The market or sector should NOT be nearing or stalling at a likely inflection points as the Stock to Watch nears the trigger. Likely inflection points are floor trader pivots (R2, R1, P, S1, S2), the day's high or low, the previous day's high or low, or an obvious consolidation from earlier in the trading day.
7. We need at least three 5-minute bars to determine if we have market and sector confirmation. That is, no Stocks to Watch trades before 9:40 ET.
8. Price must travel at least 8 cents through the entry price before turning around for a second entry (or first entry after an opening gap). Sector confirmation not necessary. Should the price touch the entry price, without going the required 8 cents, but then go at least to the 50% line, the missed opportunity counts as an "entry."
9. Maximum three trades to include 10-cent scratch loss trades.

Stocks on the Radar (scalps):

1. The default stop is 10 cents, though you should try to find a stop that's under 20 cents, if possible. Stops can be found on 5-minute charts or 25-tick charts if that's available on your charting package. Ultimately, we simply want to get out of a scalp if it's not going in our direction and/or we have lost market and sector confirmation once the trade has triggered.
2. The spread of the stock must be UNDER 3 cents.
3. The market (SPY or SPX) and sector MUST confirm the direction of the trade before a Stock on the Radar triggers. The market and sector confirmation should be LEADING the stock. That is, the market and sector rally (for longs) or sell-off (for short) should begin before the Stock on the

Radar rallies or sells off, or the market and sector rally or sell-off should be stronger (steeper move).

4. The market or sector should NOT be nearing or stalling at a likely inflection points as the Stock to Watch nears the trigger. Likely inflection points are floor trader pivots (R2, R1, P, S1, S2), the day's high or low, the previous day's high or low, or an obvious consolidation from earlier in the trading day.
5. The Stock on the Radar must not have made a substantial move in the last 10 minutes before triggering. For now, we'll say substantial means more than 50 cents. That is, if the stock moved more than 50 cents in the last 10 minutes before triggering, we'll pass on that trade because it's unlikely for the stock's momentum to carry the price another 30 cents or so from the entry to target. Better to wait for a consolidation or pullback.
6. We need at least three 5-minute bars to determine if we have market and sector confirmation. That is, no Stocks on the Radar trades before 9:40 ET.
7. Price must travel at least 8 cents through the entry price before turning around for a second entry (or first entry after an opening gap). Should the price touch the entry price, without going the required 8 cents, but then go at least to the 50% line, the missed opportunity counts as an "entry."
8. Maximum three trades to include 10-cent scratch loss trades.

IMPORTANT DISCLAIMER AND LEGAL NOTICE PLEASE READ CAREFULLY

This information is confidential and is intended only for the authorized Subscriber. If you have received this document and are not a paying or trial subscriber to Adrian Manz's Intraday Trading Plan, then please call us at (310) 584-6590 immediately.

Adrian F. Manz, is a principal of Peterson/Manz Trading, Inc. and a financial markets trader, author, lecturer and regular contributor and commentator to TraderInsight.com's free and subscription content web site. Peterson/Manz Trading, Inc., its principals and affiliates may at times maintain long or short positions in securities or derivatives of the securities mentioned in the Intraday Trading Plan, and may or may not at times take positions inconsistent with those presented in the Intraday Trading Plan. In the event that a position is held in a security or derivative at the time the Intraday Trading Plan is posted, disclosure of such position shall be made as an addendum to the Intraday Trading Plan.

The Intraday Trading Plan is to be used solely as an educational tool only and should not be construed to contain investment advice. None of the information in the Intraday trading plan constitutes a recommendation to the subscriber by Dr. Manz to buy or sell a security, the information is merely indicative of Dr. Manz's own trading plan in his own trading account for the stated trading date.

As investment advice needs to be tailored to a particular investor's specific needs, none of the information contained in the Intraday Trading Plan should be construed to be investment advice. The ideas presented are tailored only to the trading needs of Dr. Manz. Individuals wishing to tailor a plan to their own needs should seek the advice of a registered investment advisor.

©2011 Peterson/Manz Trading, Inc. Past Results are not indicative of future returns. There is a high degree of risk in trading. Peterson/Manz Trading, Inc. assumes no responsibility for your trading results. Principals of Peterson/Manz Trading, Inc. may at times maintain directly or indirectly, positions in securities or derivatives mentioned in this service.
