

Around The Horn Plan

Monday, January 11, 2010



Symbol	HSC	Sector Symbol	\$DJI
Description	HARSCO CORP		
Pattern	Fast Ball	INDUSTRIALS	
Position	Long	Resistance 2	35.40
Entry	34.78	Resistance 1	34.95
Stop	34.31	Pivot	34.22
Initial Target	35.31	Support 1	33.77
Ratio	1.13	Support 2	33.04
50% To Target	35.05		

Around The Horn Plan

Monday, January 11, 2010



Symbol	OSG	Sector Symbol	\$DXE.X
Description	OVERSEAS SHIPHOLDING GROUP INC		
Pattern	Fast Ball	ENERGY	
Position	Long	Resistance 2	50.40
Entry	48.88	Resistance 1	49.56
Stop	48.59	Pivot	47.94
Initial Target	49.43	Support 1	47.10
Ratio	1.90	Support 2	45.48
50% To Target	49.16		

Around The Horn Plan

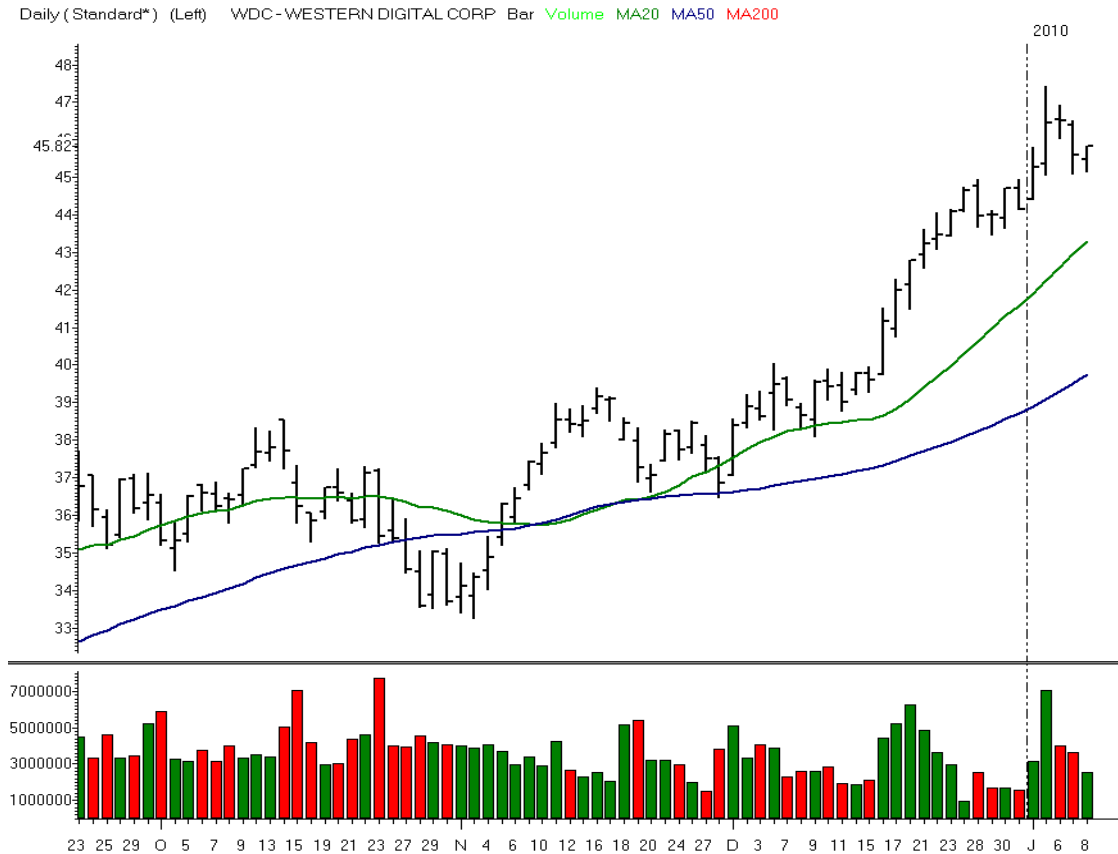
Monday, January 11, 2010



Symbol	SYK	Sector Symbol	\$HCX.X
Description	STRYKER CORP		
Pattern	Infield Fly	HEALTH CARE	
Position	Short	Resistance 2	56.49
Entry	55.11	Resistance 1	55.96
Stop	55.42	Pivot	55.58
Initial Target	54.75	Support 1	55.05
Ratio	1.16	Support 2	54.67
50% To Target	54.93		

Around The Horn Plan

Monday, January 11, 2010



Symbol	WDC	Sector Symbol	\$XIT.X
Description	WESTERN DIGITAL CORP		
Pattern	Switch Hitter	INFORMATION TECHNOLOGY	
Position	Long	Resistance 2	46.29
Entry	45.94	Resistance 1	46.06
Stop	45.55	Pivot	45.60
Initial Target	46.47	Support 1	45.37
Ratio	1.36	Support 2	44.91
50% To Target	46.21		

Stocks To Watch

Monday, January 11, 2010



AK STL HLDG CORP

Symbol	AKS
Pattern	Fast Ball
Position	Long
Entry	26.02
Stop	?
Initial Target	26.53

Resistance 2	27.54
Resistance 1	26.65
Pivot	25.04
Support 1	24.15
Support 2	22.54

MATERIALS	
50% To Target	26.28



DEERE & CO

Symbol	DE
Pattern	Fast Ball
Position	Long
Entry	57.85
Stop	?
Initial Target	58.49

Resistance 2	59.34
Resistance 1	58.49
Pivot	56.89
Support 1	56.04
Support 2	54.44

INDUSTRIALS	
50% To Target	58.17



URS CORP NEW

Symbol	URS
Pattern	Infield Fly
Position	Short
Entry	48.56
Stop	?
Initial Target	48.07

Resistance 2	50.16
Resistance 1	49.45
Pivot	49.06
Support 1	48.35
Support 2	47.96

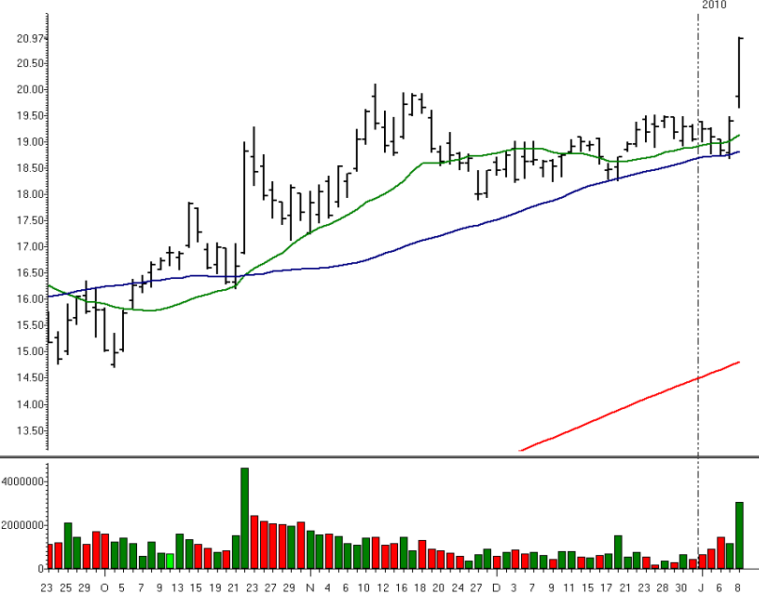
INDUSTRIALS	
50% To Target	48.32

© 2009 Peterson/Manz Trading, Inc. Past Results are not indicative of future returns. There is a high degree of risk in trading. Peterson/Manz Trading, Inc. assumes no responsibility for your trading results. Principals of Peterson/Manz Trading, Inc. may at times maintain, directly or indirectly, positions mentioned in this service.

Stocks And Sectors On The Radar

Monday, January 11, 2010

Daily (Standard*) (Left) ACF-AMERICREDIT CORP Bar Volume MA20 MA50 MA200



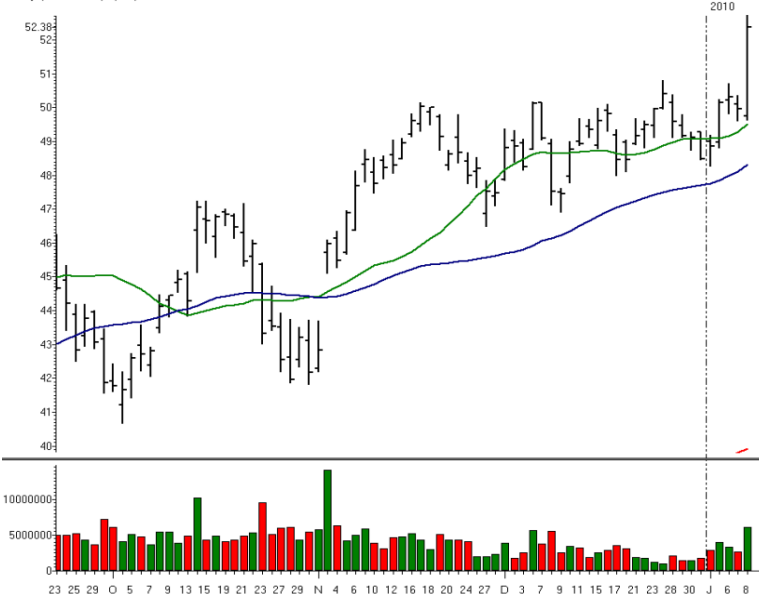
AMERICREDIT CORP

Symbol	ACF
Sector	FINANCIALS
Pattern	Line Drive
Position	Long
Entry	21.10
Target	21.42

R2	21.88
R1	21.43
Pivot	20.54
S1	20.09
S2	19.20

50% To Target	21.26
---------------	-------

Daily (Standard*) (Left) CSX-CSX CORP Bar Volume MA20 MA50 MA200



CSX CORP

Symbol	CSX
Sector	INDUSTRIALS
Pattern	Fast Ball
Position	Long
Entry	52.93
Target	53.27

R2	54.81
R1	53.59
Pivot	51.62
S1	50.40
S2	48.43

50% To Target	53.10
---------------	-------



Stocks And Sectors On The Radar

Monday, January 11, 2010



DAVITA INC

Symbol	DVA
Sector	HEALTH CARE
Pattern	Fast Ball
Position	Long
Entry	61.31
Target	61.62

R2	62.22
R1	61.61
Pivot	60.60
S1	59.99
S2	58.98

50% To Target 61.47



ROWAN COS INC

Symbol	RDC
Sector	ENERGY
Pattern	Fast Ball
Position	Long
Entry	25.41
Target	25.67

R2	26.26
R1	25.75
Pivot	24.81
S1	24.30
S2	23.36

50% To Target 25.54



Stocks And Sectors On The Radar

Monday, January 11, 2010



UNIVERSAL HLTH SVCS INC CL B

Symbol	UHS
Sector	HEALTH CARE
Pattern	Fast Ball
Position	Long
Entry	32.78
Target	33.08

R2	33.64
R1	33.13
Pivot	32.17
S1	31.66
S2	30.70

50% To Target	32.93
---------------	-------